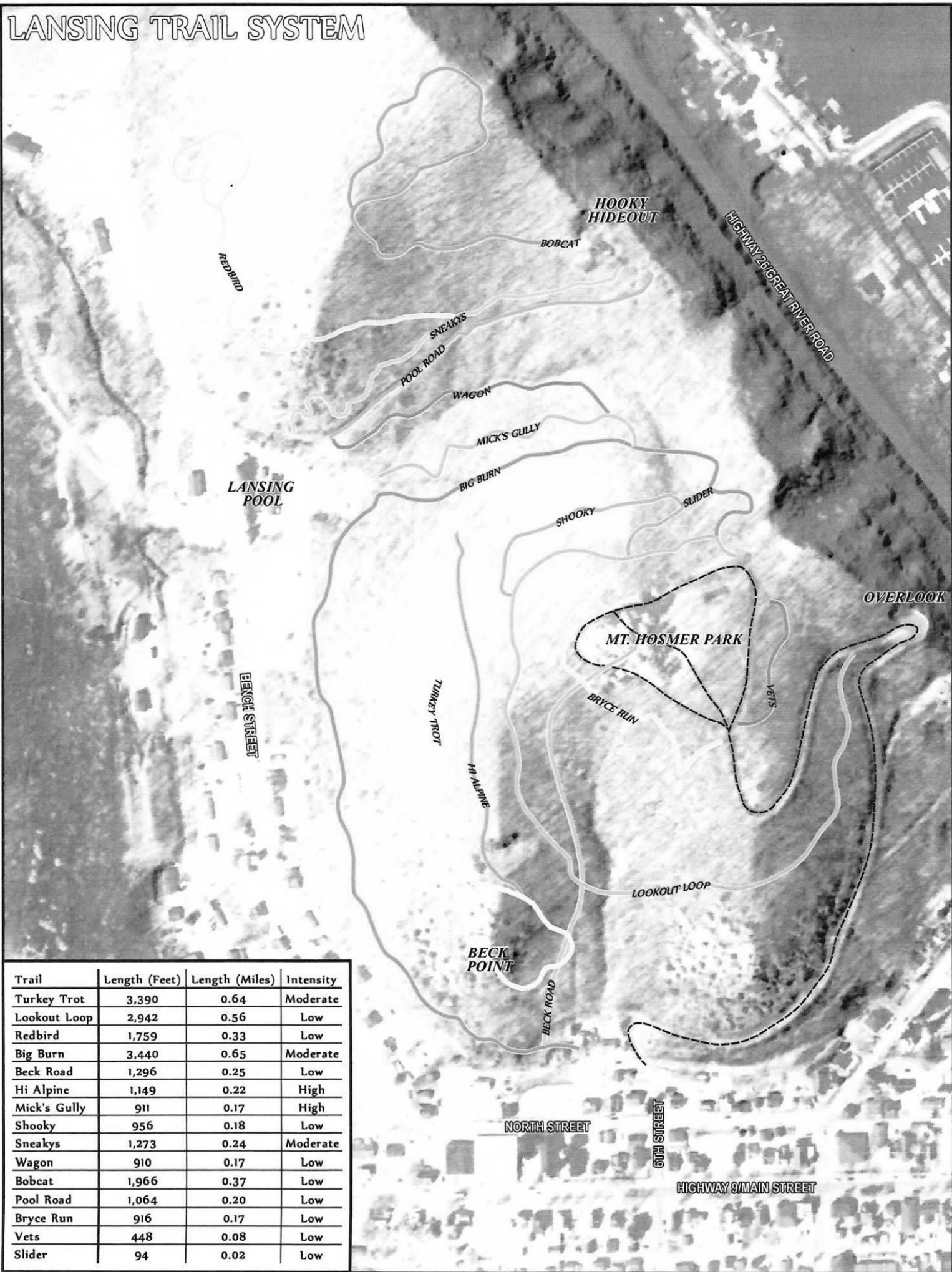


LANSING TRAIL SYSTEM



Trail	Length (Feet)	Length (Miles)	Intensity
Turkey Trot	3,390	0.64	Moderate
Lookout Loop	2,942	0.56	Low
Redbird	1,759	0.33	Low
Big Burn	3,440	0.65	Moderate
Beck Road	1,296	0.25	Low
Hi Alpine	1,149	0.22	High
Mick's Gully	911	0.17	High
Shooky	956	0.18	Low
Sneakys	1,273	0.24	Moderate
Wagon	910	0.17	Low
Bobcat	1,966	0.37	Low
Pool Road	1,064	0.20	Low
Bryce Run	916	0.17	Low
Vets	448	0.08	Low
Slider	94	0.02	Low